

28th ANNUAL MAYBERRY DAYS[®]

Celebrating the 57th Anniversary of TAGS

Slow Down and You'll Find Yourself in Mount Airy

By Jim Clark

Because *The Mayberry Confidential* is published just prior to Mayberry Days each September, it happens that I generally write this column a few weeks ahead of that time.

And so it is that I'm writing this in late August. I have no idea what will be going on in the world between now and publication, but if it's anything like what has been happening as I write and in the past few weeks, I'll be ready this year more than ever for my escape to Mount Airy and Mayberry Days.

When much in the world might seem lost, it's nice to always be able to find ourselves in Mount Airy.

No matter where any of us resides on a geographic, political, or any other kind of map, I think it's safe to say that all of us can use more Mayberry Days. That is to say that we all can benefit from a slower pace, more kindness and gentleness, and just more wholesome fun. Those have been recurring themes about the appeal of Mayberry Days (and Mayberry and Mount Airy in general) in many of my previous *Mayberry Confidential* columns. (After twenty-three of these columns, key themes have seen more than a few reruns!)

Though publication of *The Mayberry Confidential* is timed to coincide with the Mayberry Days festival, it seems to me that year-round every day in Mount Airy has the makings of a Mayberry day. The hometown of Andy Griffith (and also the home of Betty Lynn for more than a decade now!) has wonderful people and institutions, interesting activities, vital arts, and a beautiful setting (not to mention Snappy Lunch pork chop sandwiches, always a key theme for me!) that combine to make Mount Airy a truly happy place to be any day of the year.

Even with the great variety of offerings in the community, Mount Airy is careful not to neglect its connection to Andy Griffith and Mayberry. That's true nowhere more than the Andy Griffith Museum, which in June unveiled a truly spectacular renovation of its exhibits.

The state-of-the-art museum covers all aspects of Andy's life, but its Mayberry highlights are sure to please any fan. I like to think that would be especially true of the museum's founding curator, the late Emmett Forrest, Andy's friend since childhood. Emmett's collection of memorabilia remains the heart of the museum.

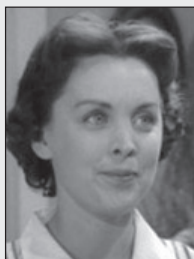
Whether you're reading these words during Mayberry Days or at some other time in the year that follows the festival, the appeal of Mount Airy is the same. Mount Airy is a really swell place to allow yourself to slow down and not only enjoy Mayberry memories but also create new memories.

Though the world can be chaotic, it's reassuring to know that even between its annual Mayberry Days festivals, Mount Airy is always ready to offer us lots of Mayberry days. So, relax, slow down, take it easy, and find yourself in Mount Airy whenever you can.



WELCOME MAYBERRY DAYS[®] SPECIAL GUESTS

We welcome Betty Lynn, Clint Howard, Ronnie Schell, Joy Ellison, Maggie Peterson-Mancuso, Rodney Dillard, Margaret Kerry, LeRoy McNees, Karen Knotts, George Lindsey Jr., and Bettina Linke. We also welcome filmmaker Greg Schell (Ronnie's son), and comedian Eric Norquist (Margaret's son) who will be participating in Mayberry Days[®].



SPECIAL THANKS TO OUR SPONSORS
MOUNT AIRY CHRYSLER DODGE JEEP RAM FIAT
508 N. Andy Griffith Parkway



- and -
CELEBRATE YOUR FRESH NEW
-FOOD LION-
SAME LOW PRICES

We continue to be grateful to TAGSRWC for supporting Mayberry Days and for their support of the Surry Arts Council all year round. If you want to slow down and call Mount Airy home, give RidgeCrest a call. We appreciate all they do for the SAC. Please support our Surry Arts Council Donors, Vendors, and all those who advertised in the *Mayberry Confidential*. Without them, we could not do what we do.

MAYBERRY DAYS[®] VENDORS

Mayberry Days Bake Sale (Friday only)
Steele's Concessions
Crispin' Kettle Corn
Barbecue \$6 sandwiches, \$10 per pound
Mount Airy Chrysler Dodge Jeep Ram
Food Lion
American Satellite Concepts
That's A Wrap
Wild Bill's Soda
Randy Graham Lemonade/Shaved Ice
LeafFilter North LLC of North Carolina
Brynn's Frozen Yogurt
The Wacky Tomatoe
We Care Concessions

OFFICIAL 2017 MAYBERRY DAYS[®] T-SHIRTS

T-shirts will be on sale in the Andy Griffith Museum until Friday, September 22 when they will be moved to the information station for sale during Mayberry Days. Cash or check preferred at the Information Station.

TUESDAY, SEPTEMBER 19, 2017

8:30 am-5:00 pm MAYBERRY DAYS INFORMATION/TICKETS, Lower Level Andy Griffith Playhouse, 218 Rockford Street, 336-786-7998

9:00 am-4:30 pm MAYBERRY POSTMARK, Post Office, 111 South Main Street

9:00 am-5:00 pm ANDY GRIFFITH MUSEUM, \$8* (includes Old-Time Music Heritage Hall admission)

10:00 am ANDY GRIFFITH PLAYHOUSE BACKSTAGE TOUR with Abigail Linville, Gather under Andy Griffith Playhouse portico, Free

11:00 am-3:00 pm OLD-TIME MUSIC HERITAGE HALL, Historic Earle Theatre, \$8*

3:00 and 7:30 pm JOHN FLOYD: THE MOUTH OF MAYBERRY, Historic Earle Theatre, \$10

THE EMBERS featuring CRAIG WOOLARD
Blackmon Amphitheatre, \$15 or Season Pass



336.786.7998 | www.surryarts.org | heather@surryarts.org

